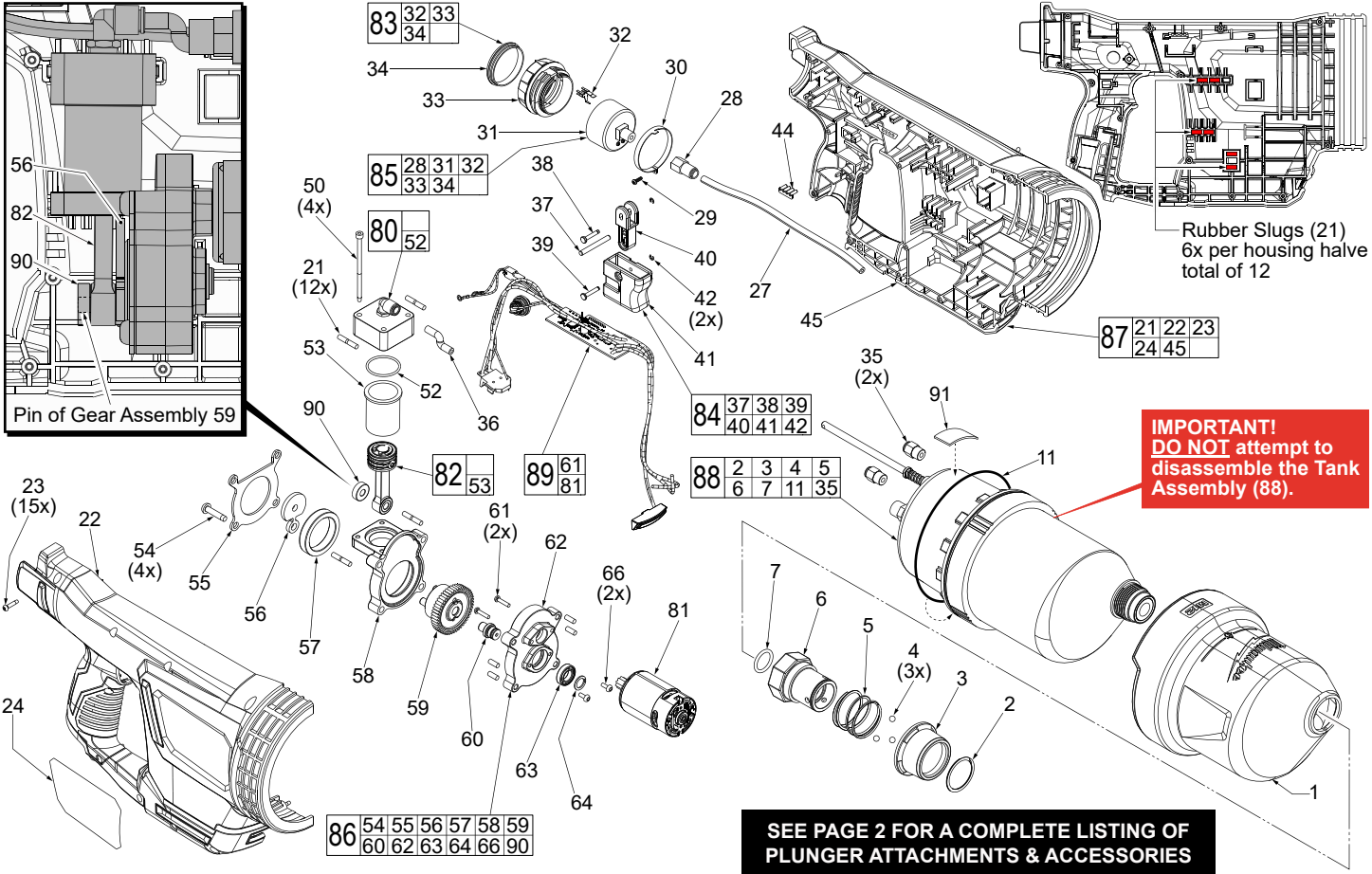
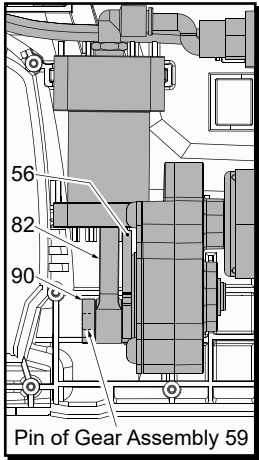




SERVICE PARTS LIST

SPECIFY CATALOG NO. AND SERIAL NO. WHEN ORDERING PARTS		REVISED BULLETIN	DATE
M12™ AIRSNAKE™ DRAIN CLEANING AIR GUN			Nov. 2017
MODEL NO. M12DCAG-0	2572-20	WIRING INSTRUCTION See Page Three	

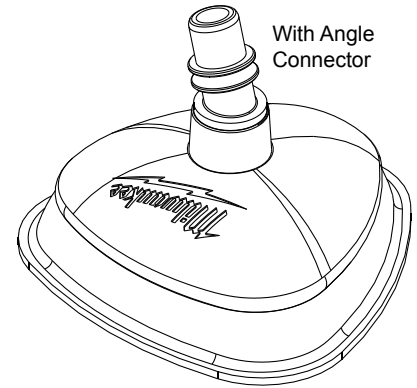
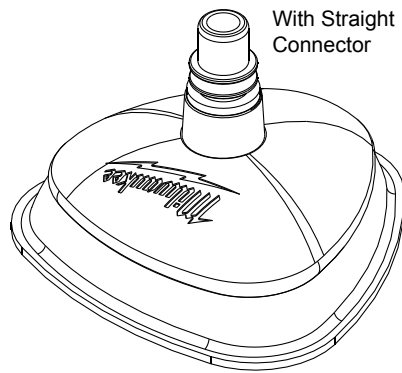


- FIG. 24 NOTES**
- A clean, dry surface is essential for proper performance for any adhesive system. The area intended for application of any adhesive label or nameplate must be prepared by cleaning with isopropyl alcohol. The solvent is to be applied with a clean, lint free applicator and the surface allowed to dry before applying the label or nameplate.
- 59,90 Press the press ring onto drive pin of gear assembly. Press flush to the end of pin.

Straight Connector
No. 533361001

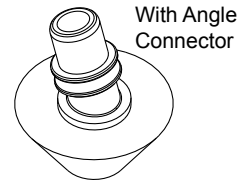
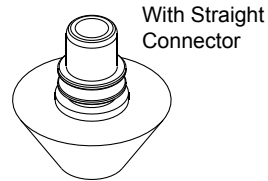


Angle Connector
No. 533553001



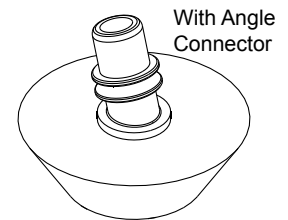
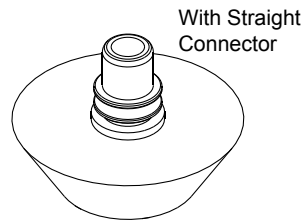
AIRSNAKE™ Universal Plunger Assembly

No. 204743002 contains 1 straight connector, 1 angle connector, 1 plunger assy.



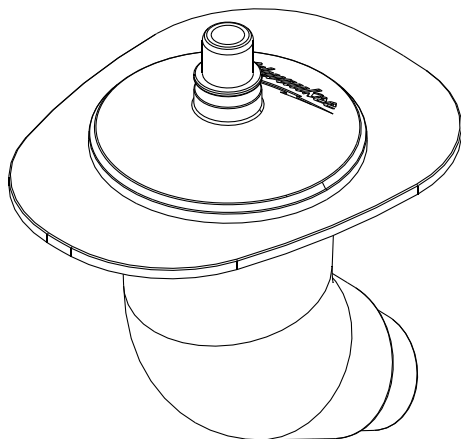
AIRSNAKE™ Small Plug Assembly

No. 204740002 contains 1 straight connector, 1 angle connector, 1 small plug

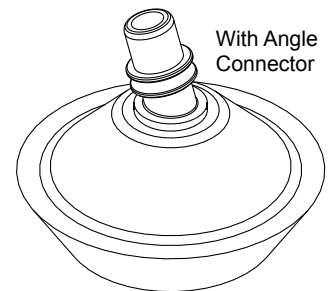
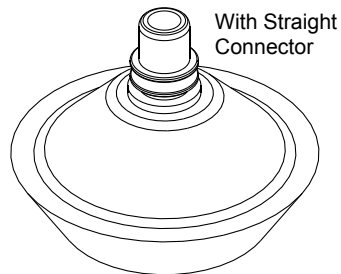


AIRSNAKE™ Medium Plug Assembly

No. 204741002 contains 1 straight connector, 1 angle connector, 1 medium plug



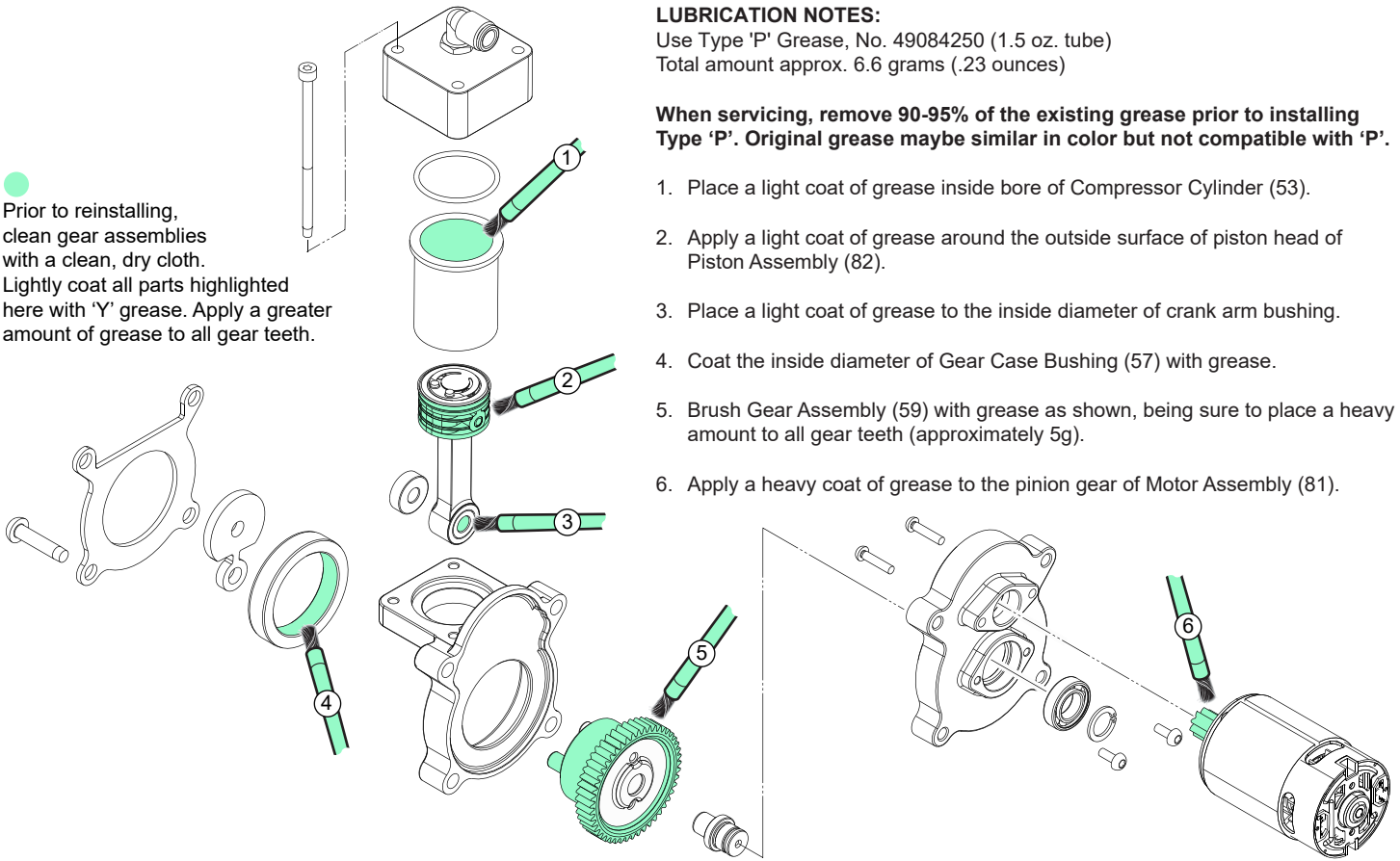
AIRSNAKE™ Toilet Attachment Assembly
No. 204744002



AIRSNAKE™ Large Plug Assembly

No. 204742002 contains 1 straight connector, 1 angle connector, 1 large plug

●
Prior to reinstalling, clean gear assemblies with a clean, dry cloth. Lightly coat all parts highlighted here with 'Y' grease. Apply a greater amount of grease to all gear teeth.

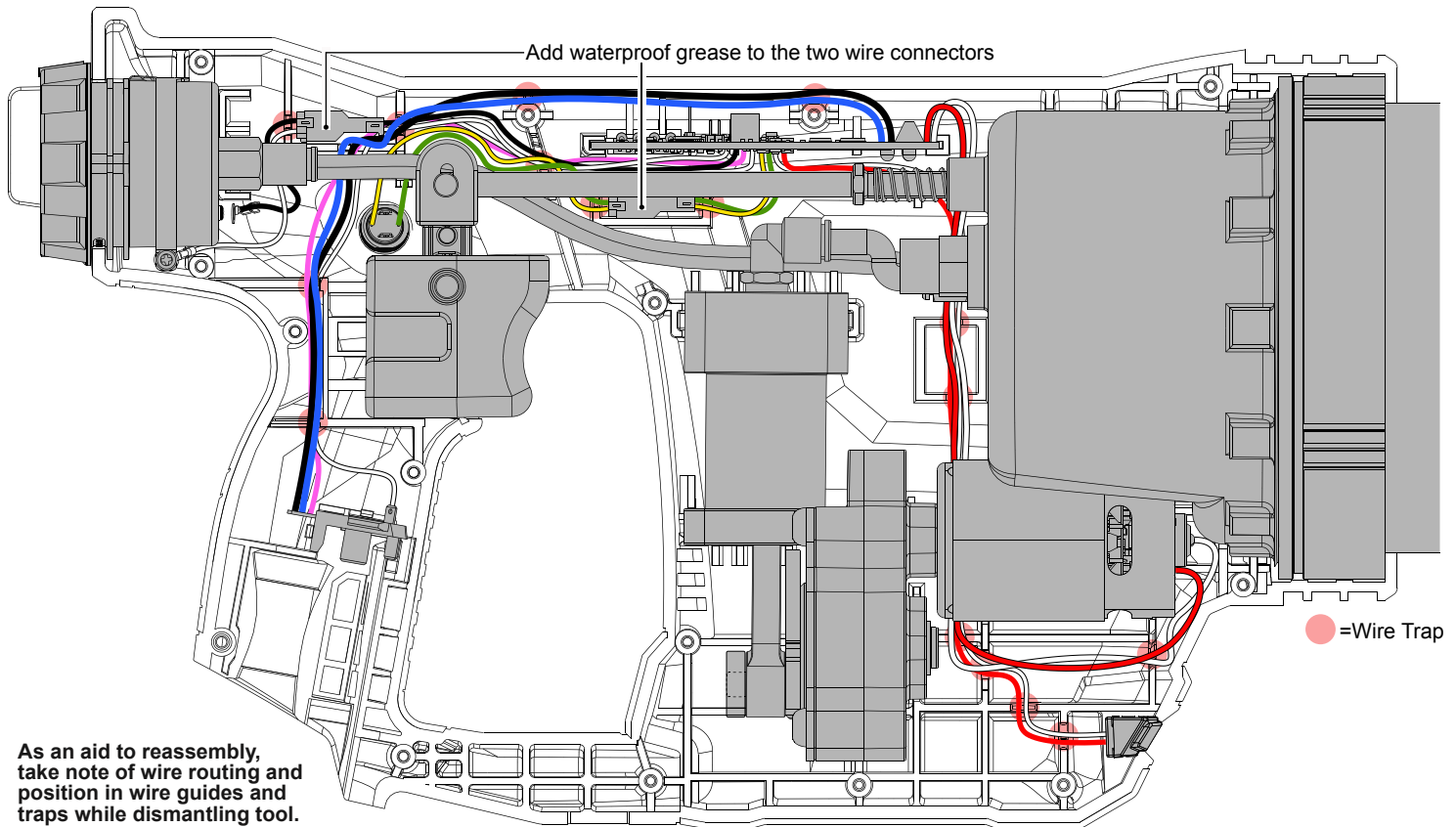


LUBRICATION NOTES:

Use Type 'P' Grease, No. 49084250 (1.5 oz. tube)
Total amount approx. 6.6 grams (.23 ounces)

When servicing, remove 90-95% of the existing grease prior to installing Type 'P'. Original grease may be similar in color but not compatible with 'P'.

1. Place a light coat of grease inside bore of Compressor Cylinder (53).
2. Apply a light coat of grease around the outside surface of piston head of Piston Assembly (82).
3. Place a light coat of grease to the inside diameter of crank arm bushing.
4. Coat the inside diameter of Gear Case Bushing (57) with grease.
5. Brush Gear Assembly (59) with grease as shown, being sure to place a heavy amount to all gear teeth (approximately 5g).
6. Apply a heavy coat of grease to the pinion gear of Motor Assembly (81).



As an aid to reassembly, take note of wire routing and position in wire guides and traps while dismantling tool.

Be careful and avoid pinching wires between handle halves when reassembling. Be sure all mechanical components are firmly and squarely seated in housing support (left housing half). Be sure all wires are tucked completely down in wire traps and that there is no interference prior to installing housing cover (right housing half). Check for proper functionality of trigger and pressure gauge dial. Install battery and make sure tool operates properly.